

# lighting today

Volume 3 | July - September 2022

## **PARKROYAL COLLECTION Marina Bay**

The recent newly renovated PARKROYAL COLLECTION Marina Bay (formerly known as Marina Mandarin) involves the remaking of the Neo-futuristic American architect John Portman's spectacular hotel which was built in 1987. Light Collab was appointed as the lighting designer for the project. **p18**



**ON THE COVER**  
PARKROYAL COLLECTION Marina Bay  
Photography: ND Photography

OTHER TITLES BY  
**TRADE LINK MEDIA PTE LTD**  
([www.tradelinkmedia.biz](http://www.tradelinkmedia.biz))

**Bathroom + Kitchen Today**  
**Southeast Asia Building**  
**Southeast Asia Construction**  
**Security Solutions Today**

---

**CALL FOR SUBMISSIONS**

Press releases, proposals for stories, and product development literature should be submitted by email to the editor at:  
[lighting@tradelinkmedia.com.sg](mailto:lighting@tradelinkmedia.com.sg)

**ASSOCIATE PUBLISHER**  
**Eric Ooi**  
[eric.ooi@tradelinkmedia.com.sg](mailto:eric.ooi@tradelinkmedia.com.sg)

**EDITOR**  
**Amita Natverlal**  
[lighting@tradelinkmedia.com.sg](mailto:lighting@tradelinkmedia.com.sg)

**MARKETING MANAGER**  
**Felix Ooi**  
[felix.ooi@tradelinkmedia.com.sg](mailto:felix.ooi@tradelinkmedia.com.sg)

**HEAD OF GRAPHIC DEPARTMENT/  
ADVERTISEMENT COORDINATOR**  
**Fawzeeah Yamin**  
[fawzeeah@tradelinkmedia.com.sg](mailto:fawzeeah@tradelinkmedia.com.sg)

**CIRCULATIONS EXECUTIVE**  
**Yvonne Ooi**  
[yvonne.ooi@tradelinkmedia.com.sg](mailto:yvonne.ooi@tradelinkmedia.com.sg)

---

**LIGHTING TODAY IS PUBLISHED BY**

**TRADE LINK MEDIA PTE LTD**  
101 Lorong 23 Geylang  
#06-04 Prosper House  
Singapore 388399

For interest in advertising and advertorials, please attention your query via:  
direct call: +65 6842 2580

ISSN 2345-7147 (Print) and  
ISSN 2345-7155 (E-periodical)

This publication is published four times a year and available on the digital platform.

To download a free digital copy, visit [lt.tradelinkmedia.biz](http://lt.tradelinkmedia.biz).

---

**DISCLAIMER**

All advertisers and contributors must ensure all promotional material and editorial information submitted for all our publications, must be free from any infringement on patent rights, copyrights laws in every jurisdiction. Failure of which, they must be fully liable and accountable for legal consequences (if any) that may arise.

The editor reserves all right to omit, amend or alter press releases submitted for publication. The publisher and editor are unable to accept any liability for errors or omissions that may occur in this process, although every effort has been taken to ensure that all information is correct at the time of going to press. Edited articles or stories are returned to contributors for check on facts at the sole discretion of the editor. No portion of this publication may be reproduced in whole or part without written permission of the publisher. The editor reserves all rights to exclude or refuse submissions at any time without prior written or verbal notice if contributing parties do not provide complete text and supporting images at a minimum of 300dpi in .jpeg and .tiff format.

# Dear Readers,

Hello again and thank you for picking up Volume 3 of Lighting Today. This issue is packed with news and products which could be useful for your next architectural project. If you looking for hotel lighting ideas, then look no further. We have showcased two hotel projects which show how lighting can be functional, aesthetics and relaxing for the hotel guests. Next in the Smart Lighting section, we focus on street lighting. Smart street lights are an important component of a city for safety and energy saving reasons. Lastly, the product showcase section is filled with interesting developments. Don't miss it. Take care and enjoy reading the issue!

Editor

*Amita Natverlal*

**VOL 4 / 2022 TOPICS**

- **Architectural Lighting:** Sustainability in Lighting
- **Smart Lighting & IoT:** Smart Buildings
- **Lighting Product Showcase:** Ambient Indoor & Outdoor Lighting, Task Lighting and Accent Lighting

**30 November -  
2 December 2022**

### Thailand Lighting Fair 2022

Bangkok, Thailand

Website: <https://thailandlightingfair.hk.messefrankfurt.com/bangkok/en.html>

**31 August -  
3 September 2022**

### WORLDBEX 2022 *(see show ad on page 27)*

Manila, Philippines

Website: [www.worldbex.com](http://www.worldbex.com)

**5 - 9 September  
2022**

### International Built Environment Week (IBEW) 2022

Singapore

Website: [www.ibew.sg](http://www.ibew.sg)

**6 - 8 September 2022**

### BEX Asia 2022 *(see show ad on page 28)*

Singapore

Website: [www.bex-asia.com](http://www.bex-asia.com)

**2 - 6 October 2022**

### Light + Building Autumn Edition

Frankfurt am Main

Website: <https://light-building.messefrankfurt.com>

**16-18 November  
2022**

### Architecture & Building Services 2022 *(see show ad on page 29)*

Singapore

Website: [www.architecturebuildingservices.com.sg](http://www.architecturebuildingservices.com.sg)

**26 - 29 July 2023**

### ARCHIDEX 2023 *(see show ad on page 30)*

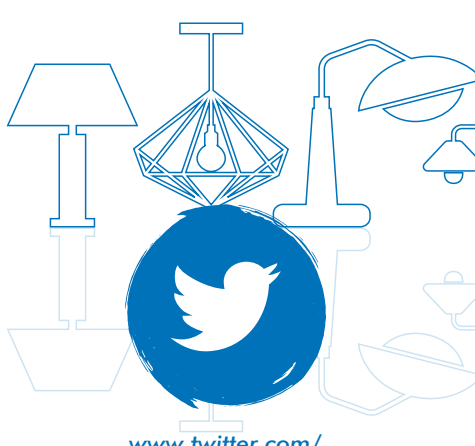
Kuala Lumpur, Malaysia

Website: <https://archidex.com.my>

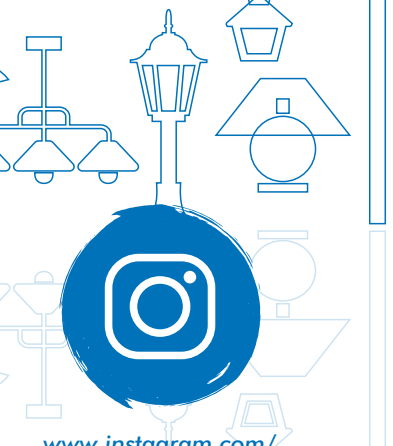
## Follow us on **Social Media**



[www.facebook.com/  
LightingToday](http://www.facebook.com/LightingToday)



[www.twitter.com/  
LightingToday](http://www.twitter.com/LightingToday)



[www.instagram.com/  
lightingtodaysg](http://www.instagram.com/lightingtodaysg)



PARKROYAL COLLECTION Marina Bay p18



Claridge's Hotel p14



Monheim Town p22

## contents

### 03 EVENTS CALENDAR

### 05 LIGHTING IN THE NEWS

### ARCHITECTURAL LIGHTING - SCHOOLS & HOTELS

14 Claridge's Hotel

18 PARKROYAL COLLECTION Marina Bay

### SMART LIGHTING & IOT - STREET LIGHTS

22 Monheim Town

### 24 PRODUCT SHOWCASE

## Cooper Lighting Solutions wins 2022 ENERGY STAR® Partner of The Year – Sustained Excellence Award

Peachtree City, Georgia, USA – Cooper Lighting Solutions, a business unit of Signify, has won the 2022 ENERGY STAR® Partner of the Year – Sustained Excellence Award from the U.S. Environmental Protection Agency and the U.S. Department of Energy for the eighth consecutive year. This award recognises continued leadership and superior contributions to ENERGY STAR.

Cooper Lighting Solutions grew its number of ENERGY STAR-certified models by 10 percent over the previous year, totaling 75 million ENERGY STAR-qualified commercial and residential units sold. Cooper Lighting Solutions continues to demonstrate its commitment as an ENERGY STAR Partner, creating innovative lighting solutions and products and partnering with national chains to promote them. Cooper Lighting Solutions has also developed product training for its national chains and supply channel partners, as well as training on the ENERGY STAR® programme and its importance to the lighting industry.



“Sustainability is a primary goal for us, and we are honoured to be recognised for our efforts for the eighth consecutive year,” said Kraig Kasler, President, Cooper Lighting Solutions. “We are committed to delivering the most innovative, energy-efficient solutions to our customers through a strong and robust agent and channel partner network, and industry partnerships like the one with ENERGY STAR help make this possible.”

“We know it’s going to take all of us working together to tackle the climate crisis, and the 2022 ENERGY STAR award-winning partners are demonstrating what it takes to build a more sustainable future,” said EPA Administrator Michael S. Regan. “These companies are showing once again that taking action in support of a clean energy economy can be good not only for the environment, but also for business and customers.”

## Nora Lighting appoints Outbound Warehouse Manager

Commerce, California, USA – Nora Lighting is pleased to announce Hugo Gomez has joined the company as Outbound Warehouse Manager, reported Fred Farzan, Nora Lighting President and CEO.

Hugo will manage outbound shipping logistics and oversee warehouse personnel at headquarters located in Commerce, CA. Hugo has served in the lighting industry for the last 24 years, contributing his expertise to several organizations in various leadership roles.

“Hugo has transformed our outbound shipping department and facilitated processes. Streamlining the system has increased efficiency and decreased errors,” said Farzan.

“His knowledge of warehouse procedures comes with more experience,” added Farzan.

Nora Lighting is a recognised leader in the development and introduction of LED lighting products and offers one of the industry’s most comprehensive LED lines including: dedicated and retrofit downlights; track and rail fixtures; panels; troffers; MLS (multi-lighting systems) multiple recessed; linear lighting; accent lighting; under cabinet lighting; RLM shades; puck lights; tape lights; pendants; cylinders; step lights; and emergency / exit signs.



Hugo Gomez. Photo credit: Nora Lighting

## Esplanade – Theatres on the Bay, Singapore, Invests in grandMA3

Singapore – Esplanade – Theatres on the Bay, Singapore’s national performing arts centre and one of the world’s busiest arts centres, has invested in 12 x new MA Lighting grandMA3 consoles.

This is part of a technical upgrade to ensure that the arts centre keeps up with the latest lighting control technology.

Instrumental in the decision to replace the older consoles with new grandMA3s – delivered by MA’s Singaporean distributor, Total Solution Marketing Pte Ltd – were Heryadi Yusof (Head of Lighting) and Ismahadie Putra (Technical Manager).

The lighting team underwent a thorough procurement process explained Heryadi, which included exploring the various industry consoles that could replace the ageing lighting desks.

“All consoles were vetted based on the criteria we set, which included having the flexibility to support the diverse range of productions across different genres that are presented at Esplanade,” he explained. In tune with the latest industry trends, they also took note of the new technologies that the various consoles could offer, as well as the after-sales and technical support expected from the local distributor.

“An open tender was conducted and

grandMA3 ranked highest in our quality-to-cost assessment,” stated Heryadi.

The sale comprised four grandMA3 lights, four grandMA3 compact XTs, two grandMA3 compacts and two grandMA3 onPC command wing XTs.

Esplanade still has its original grandMA1 and 10 x grandMA2s, the latter purchased in two batches in 2006 and 2010, but these will be phased out after the grandMA3s are commissioned in the various venues.

Currently, venues running on grandMA include the Concert Hall, the Theatre, Recital Studio, the Theatre Studio, and the Annexe Studio, and all of these will be transitioning to grandMA3 over the coming months.

Heryadi and Ismahadie are currently in discussion with the local MA training centre and making arrangements for all the relevant lighting technicians and operators to receive grandMA3 training.

They have been using and trying out various grandMA3 devices over the last year and, among other features, have found several new ways to store and manage show data.

“We also like the additional display screens, dual encoders, themed screen looks, LED lined faders, executors and knobs of the grandMA3,” reported Heryadi, who thinks the inbuilt version

of MA 3D visualiser is useful and reckons there will be more features that they will be adopting once the consoles are in everyday use.

Talking about MA Lighting in general, Heryadi, who has been Esplanade’s head of lighting since 2018 and working at the arts centre since its opening in 2002, said the consoles are versatile and work for a wide range of programmes from straightforward presentations to music concerts to complex theatre productions.

With the easing of Covid-19 restrictions in late March, Esplanade is now able to operate at full capacity in the smaller performance venues including the 245-seat Recital Studio and 220-seat Theatre Studio. In the larger spaces, the new measures allow an increase in capacities to around 1,200 for the Concert Hall and 1,400 for the Theatre. It is expected that the new Singtel Waterfront Theatre will be able to operate at a full capacity of about 600 people when it opens later in 2022.

Naturally, everyone is looking forward to an enthusiastic recovery for the arts sector and for Esplanade to be welcoming back people and artists to enjoy the dynamic, vibrant and world-class programmes of music, dance, drama, events, and other activities.



Photo: © Esplanade - Theatres on the Bay

## ETC upgrades Chiayi City Music Hall with sustainability



Photo Credit: Chiayi City Culture Center, CINE Vision Trading Co., LTD

Taiwan – Many cultural performance centres around the world are looking for sustainable and environmentally friendly lighting solutions for a variety of performances in the future. Chiayi City Cultural Center in Taiwan is one of these. The Center planned an upgrade to their music hall and consulted with CINE Vision Trading Co., LTD (CINE Vision), the ETC dealer for the Taiwan market. With the reliable services and product demonstrations provided by CINE Vision, ETC's high-quality fixtures were selected, including Source Four LED Series 3 with the Lustr X8 array and CYC adapters and High End Systems' SolaPix series fixtures.

Chiayi City Culture Center is located in Taiwan, covers an area of more than 5,000 square metres. It contains three buildings, including a museum, a library, and a music hall. The music hall seats 943. Several renowned cultural groups such as The National Taiwan Symphony Orchestra and the Ming Hwa Yuan Arts and Culture Group performed in the music hall after the upgrade.

Zack Lee, the venue manager, commented, "The performance organizers are impressed by the beautiful lighting effect on the cyclorama brought by Series 3. The full-colour Lustr X8 array added with Deep Red creates a vivid and nuanced colour which feels like using traditional tungsten with gel." The high CRI and the smooth linear dimming at 0-5 percent brightness with low light spill are why Zack picked Series 3 over Series 2.

The unmatched brightness of the wall wash effect brought by SolaPix also impressed the customer. It will surely enhance the lighting effects and take art performances like ballet repertoires to the next level, and create infinite possibilities for future lighting design.

CINE Vision offers reliable services and engaging marketing activities like product seminars and social media promotions. CINE's professional team actively promotes ETC's industry-leading and highly-reviewed products in the market. Many local customers like Chiayi City Culture Center are impressed by these excellent initiatives, which successfully build trust and accelerate business growth in the local market.

## Proteus Excalibur™ creates elegant finale look at Expo 2020 Dubai Closing Ceremony

Dubai, UAE – Lighting designers Travis Hagenbuch and Bob Dickinson lit the Expo 2020 Dubai Closing Ceremony and turned to Elation Professional's powerful Proteus Excalibur™ beam moving head to create a spectacular finale look that brought to a touching close the six-month Expo journey.

The Emmy-award winning designers – who also lit Expo's Opening Ceremony back in September – sought a compact, IP-rated beam light with power to project an impactful ring of light out of the Al Wasl Dome. “We were tasked with how to make it happen within the constraints we had,” comments Travis Hagenbuch, who notes that the brief came from Expo 2020 Director-General Reem Al-Hashimi. “It was a beautiful poetic moment, simple and elegant, and a fitting way to end the Expo.”

### The story

The Expo story began during the Opening Ceremony when a young Emirate girl was given a ring, which unlocked a world of discovery and connection. The ring – a gold ring found years ago on an archeological dig outside of Dubai – came to symbolize connection, unity and strength, and inspired both the logo and theme of Expo 2020 ‘Connecting Minds and Creating the Future.’

For the March 31 Closing Ceremony, the same girl, who had just spent six months at the Expo gathering information about the world, reunites with the ring, which had transformed into a large scenic piece that was lowered from the top of Al Wasl Dome and returned to the desert.

The energy that the ring had absorbed during the Expo then emanated out from the earth and out through the center of the Al Wasl Dome as a huge shaft of light.

### Shaft of light

Hagenbuch and Dickinson began their initial spec designs in 2019 when producers FiveCurrents were awarded production of the Expo 2020 Opening and Closing Ceremonies then developed it further over the next 24 months, a period that included a year of pandemic delays. Hagenbuch comments, “The timing was actually really good because we had seen a demo of the Proteus Excalibur at PRG in Los Angeles in December 2021 and just a few weeks later got the brief about the shaft of light and the end tableau. Due to staging constraints and where the lights had to physically sit, we needed something pretty small and compact so I knew that traditional Xenon searchlights would not work. We really wanted a similar effect that a 7K Xenon might give but in a much more efficient package.” The designer says they also knew that the fixtures would potentially be rained on from a water effect in the show so an IP65 rating was needed. “As we checked all these boxes, we realized that the Excalibur would be a really good choice.”

Twenty-four Proteus Excaliburs were supplied by vendor Agora, the lighting supplier for Al Wasl Plaza, and used for the



concluding moment. Recessed in a deck that rode on a stage lift that raised and lowered for different staging moments, the Excaliburs' ultra-narrow 0.8-degree beams shot dramatically out through the opening hole of the Al Wasl Dome in the moving finale. The fixtures were also employed briefly on an emotional performance by celebrated cellist Yo-Yo Ma.

### Proteus Maximus

Also used on the ceremonies were Elation Proteus Maximus™ LED moving heads – specified by Woodroffe Bassett Design (WBD) for the myriad of performances in Al Wasl Plaza. “The Maximus worked great in that environment as well,” Hagenbuch states. “Our team worked with WBD as the ring was being developed to make sure it would work for their shows and the ceremonies. It was a great choice in the end. We were all saying that had this event happened five years ago, before LED engines were this powerful, it would have been an entirely different experience and likely a maintenance nightmare. Maximus held up well in the desert environment.”

Expo 2020 in Dubai was clearly a cultural as well as a production success with over 24 million total visitors and a production team that captured beautifully the Closing Ceremony's spirit of optimism and global togetherness.

## grandMA3 for Special Beijing Production

Paderborn, Germany – The Beijing People’s Art Theatre used their new grandMA3 lighting control system for a special revival of acclaimed historical drama *Cai Wenji* directed by Tang Ye, which was part of the venue’s 70th anniversary season.

The work details the life story of Cai Yan, also known as ‘Wenji’, a female literary icon during the late Eastern Han Dynasty (25-220). The original production by renowned playwright Guo Moruo (1892-1978) was first staged at the venue in 1959 and is known for its poetic style and traditional Chinese aesthetics.

The original lighting design by Song Yin was reworked for this contemporary version of the show by Meng Bin, who retained all the essence and mood of more classical lighting and infused this with some modern creative twists. Lighting was programmed by Zheng Pengfei, and the stage design was by Chen Yongxiang.

Working closely with the design team was Lux Li, product promotion manager from MA Lighting’s Chinese distributor, ACE. The consoles used on this production were two grandMA3 full-sizes (live and backup) plus some new grandMA3 nodes.

The theatre’s lighting department has been running on grandMA for some years embracing all three generations of grandMA to date. Most recently, they have invested in three new grandMA3 consoles, two full-sizes and one light to replace the older desks.



Photo: © Meng Bin

Lux explained that they wanted to keep abreast of the latest technologies and having a very successful history with the brand, naturally looked at grandMA3 as a solution. They liked many features of the OS, including the power and scope of the Macro commands and the fact that the console is relatively straightforward, especially if familiar with MA architecture.

*Cai Wenji*’s lighting was a mix of moving lights – Vari\*Lite VL3500s, VL1100s, Martin MAC 2000 washes, Fine1519 Pixies and Martin Rush MH1 Profiles – plus a substantial amount of conventionals, all of it consuming 5 universes of DMX.

Zheng Pengfei liked several

grandMA3 features of the console including Selection Grid which is a neat way to organize the fixtures in relation to each other, and the Phaser Editor which allows flexible operation of the fixture’s parameters or can be utilised to dynamically create Phasers with multiple steps as well as a simple trackpad to move fixtures. “These and many more tools make programming and modification streamlined,” he commented.

He finds Scribble useful, and the fact that the current cue setting fade can be directly clicked on the time and a number added and also likes Gel Pool noting that the colour is mixed very accurately, which can save serious time in colour adjustment and tweaking. The new Programmer can copy saved effects that can be modified and re-saved which is very convenient.

Overall, his impression of grandMA3 is that the console is “very easy to use”.

The biggest challenges of lighting this show included being extremely careful with the use of colour and paying attention to the general control and accuracy needed along with the detail demanded over the production’s narrative timeline.

The theatre’s head of lighting, Fang Yi underlined the importance of a good relationship with the distributor when making a major new equipment investment like this one in grandMA3 as well as for feedback, consultation and swift and efficient support when needed, and comments that ACE provide “excellent and invaluable” technical support and training.



Photo: © Meng Bin

## NNNCo partners with Wellness TechGroup to roll out one of LoRaWAN®'s largest smart street lighting projects in the world

Sydney, Australia – Sydney-based National Narrowband Network Company (NNNCo), the 100 percent IoT telco, has signed a contract with technology provider Wellness TechGroup, to provide IoT network coverage to 70,000 smart streetlights in Montevideo, the capital of Uruguay. The project will cover 200 square kilometres and provide smart street lighting to more than 1.3 million people, improving community and road safety, and reducing carbon emissions by up to 80%. This initiative will also establish an infrastructure-based network that can accommodate other smart city initiatives.

NNNCo, Wellness TechGroup and their partners will replace Montevideo's existing lighting system with LED technology and roll out a powerful and interoperable remote management system, which is designed to reduce carbon emissions by 31,500 tonnes of CO<sub>2</sub> per year, a decrease of approximately 80 percent. The project will also improve the quality of public lighting service and provide greater efficiency and operations management to the whole city.

The Smart Street Lighting project will see the deployment of 70,000 new streetlights with LED technology using Wellness TechGroup's CMS WeLight Manager software, LoRaWAN® Actis Nema 7 LPC nodes and NNNCo's LoRaWAN® network. Smart Street lighting provides a unique opportunity to improve public and road safety, energy efficiency and customer amenity via network and application management software and the integration with other urban smart applications like waste management and water conservation.

NNNCo, Australia's leading LoRaWAN® network operator with a carrier licence, provides a scalable IoT network service and platform to enable enterprise-grade solutions for businesses and the government. LoRaWAN®, now an international ITU standard, is a proven, scalable low-power, wide-area networking protocol technology that wirelessly connects devices to the internet and manages communication between end-node devices and network gateways.

Rob Zagarella, NNNCo CEO and Co-Founder, said: "This is a milestone contract in the establishment of



Photo credit: NNNCo

NNNCo's LoRaWAN® network as one of the world's leading networks for smart streetlight use cases and we hope to facilitate similar projects in Australia and in other countries in the near future," explained Mr Zagarella.

"This is a great example of Australian technology driving global Sustainable Development Goals", added Mr Zagarella.

Wellness TechGroup and NNNCo will be able to provide added services to the city of Montevideo as the contract signed include the opportunity to bring third parties customers across the same gateways into the LoRaWAN network. The Australian network provider will be able to service customers across the whole city, using the NNNCo N2N-DL data aggregation layer and the NNNCo N-Tick device interoperability programme.

Wellness TechGroup will roll out 70,000 Actis Plus Nema 7 LCP nodes for remote control of light points. The Actis Plus Nema 7 nodes will connect with WeLight Manager TALQ certified CMS, powerful and leading-edge software that will provide real-time information on all the data from the intelligent public lighting service. Luminaries become effectively a data-enabled lighting server, true central nodes and form part of a smart city IoT ecosystem, beyond lighting.

David Garcia, Wellness TechGroup CEO, said: "We have deployed more than 300 smart lighting projects worldwide, where we are already managing almost 1 million points of lights in municipalities remotely." "Our technology must help reduce

the costs, improve the efficiency and environmental impact and provide a better service, but it must also serve citizens by improving their day-to-day. Montevideo will now have a more versatile lighting system, capable of responding to events and unforeseen events, facilitating a feeling of more security on the streets."

Montevideo's new public lighting system will be one of the largest smart street lighting projects over LoRaWAN to date. LoRaWAN technology was selected to ensure a low total cost of ownership, advanced technical attributes, high security, flexible network deployment models, optimisation of battery life and the ability to access a fast-growing ecosystem of other solutions.

"I congratulate NNNCo on this massive LoRaWAN deployment, which exemplifies how 2021 has truly been the year of scale for the LoRaWAN standard," said Donna Moore, CEO and Chairwoman of the LoRa Alliance®. "This project demonstrates the strong value of LoRaWAN, first in its flexible deployment for street lighting, and second, as a means to positively impact the environment, people's lives and business efficiency. I look forward to following the progress of this project and seeing the positive impact that NNNCo and LoRaWAN bring to Montevideo."

NNNCo and Wellness Techgroup are investee companies of Enzen, a global knowledge practice that provides consulting, technologies, governments, non-governmental organisations and not-for-profits. This contract shows the synergies of both companies in the areas of IoT, smart cities and sustainability.

## Crystal Harmony by Preciosa Lighting sings a sparkling symphony at the Shangri-La Qiantan, Shanghai

Crystal Valley, Czech Republic / Shanghai, China – Preciosa Lighting, a leader in hospitality lighting trends, is bringing peace and harmony to the Shangri-La Qiantan, Shanghai with their latest dynamic crystal lighting sculpture. The Shangri-La brand believes in “treating a stranger as one of our own” and focuses on creating tranquil surroundings amidst inspirational architecture and design. In Shanghai, they honoured this ethos with Crystal Harmony, a bespoke piece inspired by nature’s awakening every spring.

The Crystal Harmony sculpture features 45 crystal yulan flower petals and six pairs of crystal wings, all beautifully handcrafted in the heart of Europe. It was inspired by Crystal Biosphere, a lighting concept Preciosa first presented at the Euroluce 2017 exhibition in Milan. Crystal Biosphere features an automata. An automata’s mechanisms are cyclical – no beginning and no end. In Crystal Biosphere, the movement of light is set in motion, forever changing but never ceasing. The idea behind it was to bring the historical concept of the chandelier with its unique sparkling properties into our contemporary present. For Crystal Harmony, the Preciosa Engineering team crafted the automata so that the wings of the crystal birds gently move within the sculpture. The combination of sculpture and automata elevates the visual wonder and fascination



Crystal Harmony in the Shangri-La Shanghai. Photo credit: Preciosa Lighting

for visitors. The yulan flower petals were individually handcrafted by glass masters. The overall feeling is one of peace and serenity.

“This installation is a statement

piece that draws in everyone who passes through Shangri-La’s lobby,” said Maher Akil, Sales Manager for China. “It brings an atmosphere of tranquillity to the space and we hope that guests can carry that feeling with them throughout their visit.”

Shangri-La Qiantan, Shanghai was jointly designed by renowned international design studios Ga, STACK, Takenouchi Webb and HBA who took inspiration from nature and Shanghainese architecture and culture for the property’s design.

“The project was a logistical challenge with the project designer in London, the hotel operator in Hong Kong and the developer in China, plus the lighting actually being created in the Czech Republic,” Mr. Akil said. “Preciosa Lighting’s global presence was a key advantage here and made for a smooth collaboration. This was a lovely project to work on and we look forward to future cooperation with Shangri-La properties worldwide.”



Photo credit: Preciosa Lighting

## Synapse Wireless joins the Zhaga Consortium and launches Zhaga Controllers for intelligent LED luminaire control

Piscataway, New Jersey, USA – Synapse Wireless, Inc., an Internet of Things (IoT) company and a member of the McWane family of companies, has become a Regular Member of the Zhaga Consortium.

Synapse creates a single platform that enables affordable, scalable, easy-to-use networked wireless lighting control solutions that help companies reveal and reduce energy waste. The company recently expanded its integration path for LED Luminaires with the launch of the ZHA-S1 Twist Lock Zhaga Controller.

“The Zhaga Consortium is very pleased to be joined by Synapse Wireless,” states Dee Denteneer, Secretary General of the Zhaga Consortium. “We are a global lighting-industry organisation with the purpose to enable new markets for connected and serviceable lighting through interoperability. Zhaga specifications like the Zhaga Books 18 and 20 enable smart cities and smart buildings by creating a platform that

connects luminaires, drivers, control & communication devices and sensor input nodes. The source of inspiration for market needs is our global membership. We are convinced that through its membership, Synapse Wireless will contribute significantly to Zhaga’s work addressing comprehensively new growth areas in IoT and the service economy.”

The recently launched Zhaga Controller (ZHA-S1) is a field installable controller that provides wireless lighting control of LED fixtures that utilise D4i Certified LED Drivers and standard Zhaga connectors. OEM LED Luminaire Manufacturers can use the Zhaga Controller to quickly install an intelligent solution that meets energy requirements for lighting controls in both indoor and outdoor applications.

“We are pleased to join the Zhaga organization to further the benefits of ease of installation and faster time to market,” stated Michael Davidson, Solution Engineer for Synapse Wireless.

**SYNAPSE**



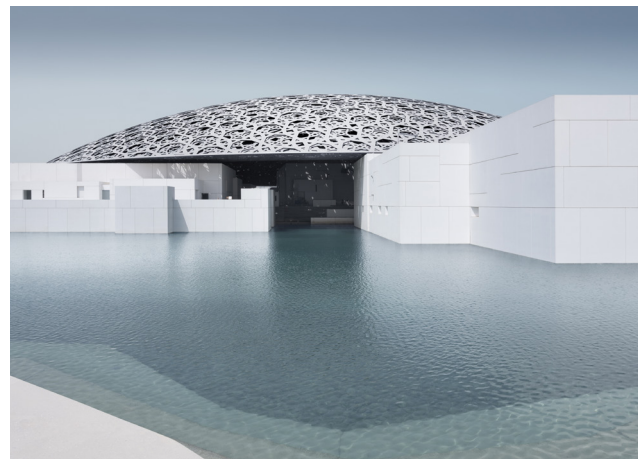
“The Zhaga and Synapse partnership strengthens cost saving potential and provides our customers with the flexibility needed to pursue the high growth market of wireless networked lighting controls for today and into the future.”

Because the Zhaga Controller integrates with the Synapse SimplySnap platform it allows additional control and insights beyond standardisation and energy consumption. The SimplySnap solution integrates all controls and sensors to provide insights which can drive facility teams to normalize energy goals, optimise productivity, and enhance profitability across facilities.

## 20 years of customised lighting: Zumtobel’s TECTON continuous-row lighting system celebrates anniversary

Dornbirn, Austria – Both the name and the concept behind Zumtobel’s innovative TECTON system were inspired by the geological phenomenon of tectonics, or continental plate shifting. «With the difference that TECTON does not shift continental plates, but luminaires - and not over millions of years, but in the blink of an eye,» smiles Andreas Fussenegger, Head of PM Trunking Systems & Battens at Zumtobel.

The TECTON continuous-row lighting system has been combining sustainability with user-friendliness for 20 years. Thanks to the tool-free mounting concept and an unlimited variety of matching luminaires and accessories that can be combined, the system, trimmed for future viability, can be configured effortlessly for any new requirement. As a universal trunking system, TECTON comprises the three components of lighting, control and emergency/security lighting. It not only offers connection options for a wide variety of luminaire types, but also for sensors and other IoT components. Thanks to this innovative concept and the matching digital services from Zumtobel, the lighting infrastructure is becoming the backbone of intelligent buildings. The lighting infrastructure thus offers space for future digital applications such as store analytics, indoor navigation and geo-notifications in retail or asset tracking and light fidelity in industry and logistics.



Louvre Abu Dhabi, Abu Dhabi, 2019. Photo credit: Mohamed Somji

### A continuous-row lighting system conquers the world

In the two decades since its development, TECTON has made numerous groundbreaking architectural projects around the world shine across industries:

- **Marienkrankehaus Hospital, Hamburg, 2008:** The psychological effect of the right light in hospitals and care facilities is increasingly becoming the focus of research. At Marienkrankehaus hospital, a people-oriented lighting and color concept based on Zumtobel's TECTON system creates a soothing atmosphere for patients and staff alike.
- **Google Headquarters, London, 2013:** The technology company's office concept focuses on its employees, and Zumtobel's TECTON system puts the unconventional furnishings in a light that inspires both concentration and creative collaboration.
- **University of Arts Linz, Linz, 2017:** Zumtobel's versatile TECTON continuous-row lighting system provides people-centered light in all rooms of the University of Art and Industrial Design, promoting seeing and learning in equal measure. The highlight of the refurbished building is the "Transcendental Lift", an impressive elevator made of glass. Here, too, Zumtobel set unique accents with its TECTON lighting system.
- **Reserved, London, 2017:** Zumtobel's highly dynamic lighting concept based on the TECTON system underlines the store's brand management and attractively stages the exclusive fashion.
- **Volkswagen Factory, Wrzesnia, 2017:** 16,000 TECTON C LED luminaires over a distance of 40 kilometres immerse the Volkswagen production plant in Wrzesnia, Poland, in energy-saving light that optimally supports the various tasks in automotive production. All functions such as power supply, lighting control and connection to emergency lighting are seamlessly integrated into a multifunctional trunking system.
- **Louvre Abu Dhabi, Abu Dhabi, 2019:** Museums such as the Louvre Abu Dhabi not only place high demands on lighting in order to show off each exhibit to its best advantage, but also on safety in the form of emergency lighting. Zumtobel can combine both in the Museography Gallery with an aesthetically effective continuous row luminaire in the glass ceiling.
- **INTERPSAR, Haus am Schottentor, Vienna, 2021:** With its timeless elegance, the Wilhelminian building set once the tone for new bank buildings. In the former banking hall, light now stages the complete range of the local supermarket. The historic glass ceilings are backlit with TECTON, creating the impression of daylight streaming into the room.

These and many other successful projects from the last twenty years impressively demonstrate the diversity of the TECTON continuous-row lighting system. Whether office or production hall, shopping or convalescence - Zumtobel creates customised lighting solutions for every conceivable requirement, for the present and the future.

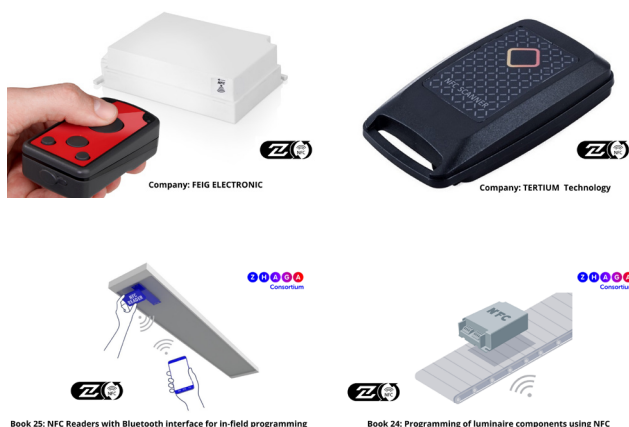
## First Zhaga-NFC readers earn certification

Piscataway, NJ, USA – Zhaga specifications Book 24 and 25 define the programming of NFC-programmable luminaire components and enable easy data management over the entire lifecycle of a smart luminaire. Zhaga has also developed a corresponding Zhaga-NFC certification programme for NFC readers and programmable luminaire components such as LED drivers. FEIG ELECTRONIC and TERTIUM Technology are the first companies that have earned Zhaga-NFC certification for a number of their NFC readers.

An increasing number of lighting applications requires reading out parameters and changing of settings of LED drivers in the field. Manufacturers of LED luminaires currently use a variety of methods for in field programming. Zhaga gives installers, system integrators and utility companies the option to select only one programming tool which works with all fieldmaintenance applications from all vendors implementing Book 25 and all NFCprogrammable devices implementing Book 24.

NFC-readers by FEIG ELECTRONIC and TERTIUM Technology have been Zhaga-NFC certified and can now carry the Zhaga-NFC certification logo. The devices implement the technology described in Zhaga Books 24 and 25.

Book 24 describes the programming of luminaire



Book 25: NFC Readers with Bluetooth interface for in-field programming

Book 24: Programming of luminaire components using NFC

components using NFC and Book 25, which was published in February 2022, defines a Bluetooth Low Energy communication protocol for the communication between the field-maintenance application on a smart device and the NFC reader. These are the first devices of an emerging eco-system to solve the data management problems of smart luminaires with interoperable maintenance tools enabling configurable luminaires easy to service over their entire lifecycle.





# Claridge's Hotel

London, UK

---

**PROJECT NAME**

Claridge's Hotel

**PROJECT LOCATION**

London, UK

**CLIENT**

Claridge's Hotel

**ARCHITECT & DESIGNER**

Sylvain Dubuisson

**DESIGNER AND CREATOR OF  
GLASS LIGHTING INSTALLATIONS**

Sans Souci

**LIGHTING DESIGNER**

L'Observatoire International

**COMPLETION**

2022

**PHOTO CREDIT**

Simon Kennedy



*Sans Souci, Czech designer and creator of glass lighting installations, reveals a series of custom-made installations for Claridge's hotel in London. 264 pendants were specially designed and produced to illuminate the world-famous art deco interiors.*



The contemporary lighting retrofit was the vision of leading lighting designers L'Observatoire International with each installation designed by French architect Sylvain Dubuisson, well known for mixing classical style with cutting-edge lighting technologies. Each piece is made from opaque, sandblasted glass crafted into geometric patterns, which ensures unique light dispersion. This is further enhanced by fitting two-tone LED strips and one main light source to create a very special and sophisticated ambience.

“When I designed these pieces for Claridge's, I wanted them to be both decorative and intriguing to fit with the elegance of the art deco interior design. This was achieved by combining two contrasting patterns – rectangular and

circular – similar to Chesterfield sofas. The large, complicated designs were then produced in white glass, which embodies simple sophistication. Manufacturing large installations such as these is complicated but I am thrilled with the results, which stay true to my original designs, said Sylvain Dubuisson, architect and designer.

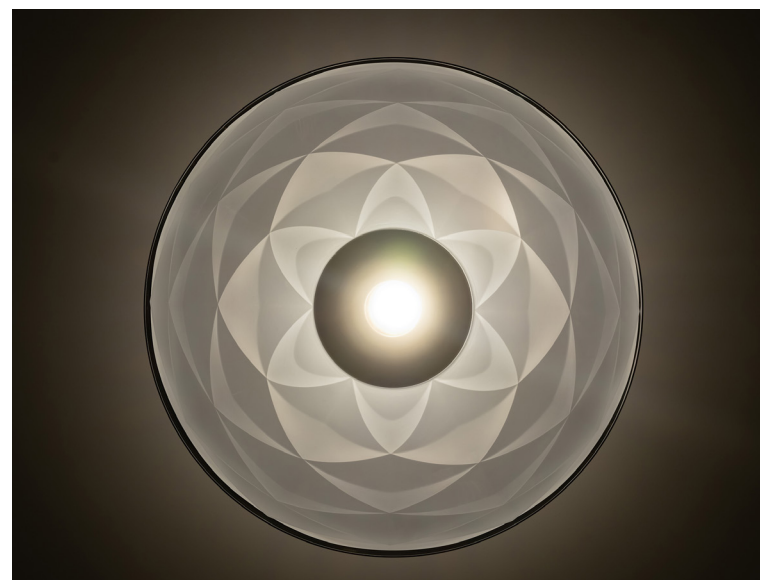
“We were delighted to have the opportunity to work with L’Observatoire International and Sylvain Dubuisson, world leaders in lighting design. Dubuisson is always looking to work with new technologies and materials, which is something we are passionate about at Sans Souci. The development process took lots of time and resources to create these beautiful pendants in a colour that is entirely unique to this project. The final installations are elegant and one of a kind, just like Claridge’s,” added Dominik Cienciala, Managing Director for Sans Souci UK.

Hervé Descottes, renowned lighting designer and Co-founder of L’Observatoire International, explains the vision behind Claridge’s new lighting: “Claridge’s is an iconic building, with such a rich history. When I was asked to re-design the lighting for the guest circulation at the hotel, I wanted to create a series of beautiful iconic moments for guests, to perfectly connect the special experience of dining at the ground floor

or first visiting, to the luxury of staying there and the rooms.

“First, we brought an ambient layer of cove lights that accentuated the height and ornate detailing in the corridors, and introduced a system of tunable white fixtures that warm gradually from day to night. Secondly, we needed to design a light fixture that was iconic and completely unique; that fit perfectly in the design heritage of Claridge’s, but felt timeless. With longtime collaborator Sylvain Dubuisson, we designed a fixture that is both beautiful and functional- with many layers of light that allowed it to provide cooler, diffuse light in the day then transition to warm, more directional light at night. The realization of the design was made possible with the expertise of Sans Souci and their experience with cast glass- whose involvement throughout the process ensured that we were able to devise specific fabrication solutions for these very beautiful pendants, that transformed these spaces and became a beautiful addition to the hotel.”

A total of 264 pendants and 198 wall lights were made to illuminate Claridge’s interiors. This adds to the list of Sans Souci projects London, which includes the Southbank Spa, Connaught Patisserie, The Langham Hotel, 1 Blackfriars Tower Crown Plaza hotel, Royal Lancaster hotel, and Fortnum & Mason – the Parlour & the Fountain Restaurant.







# PARKROYAL COLLECTION Marina Bay

Singapore

**PROJECT NAME**

PARKROYAL COLLECTION Marina Bay

**PROJECT LOCATION**

Singapore

**CLIENT**

Aquamarina Hotel

**ARCHITECT**

FDAT Architects

**LANDSCAPE ARCHITECT**

Ramboll Studio Dreiseitl

**LIGHTING DESIGNER**

Light Collab

**COMPLETION**

2021

**PHOTOGRAPHY**

ND Photography



*The recent newly renovated PARKROYAL COLLECTION Marina Bay (formerly known as Marina Mandarin) involves the remaking of the Neo-futuristic American architect John Portman's spectacular hotel which was built in 1987. The existing hotel offered the ideal stage for the reinvention of the atrium hotel, with bringing the garden into the atrium.*

Upon entering, guests will be greeted by lush greenery, invited in by the 13 metres green wall and cascading planters that creates a scenic 180-degree view of a forest. This journey also includes entering the glass lift and arriving on level 4 and crossing the bridge, with the greenery on both sides of the bridge and arriving at the reception at the end of the bridge.

The challenges of lighting design involve introducing layers of light in the impressive atrium space, working with limited existing lighting points, integrating the new and old elements, and the trees and planting scheme unto the cascading planters. The atrium receives limited daylight exposure and poses as a challenge to the survival of the trees and plants. While grow lights are definitely required to support the growth of the garden, achieving certain technical requirements of photosynthetic active radiation levels, the general concern was how the exposed grow lights will co-exist with the hotel guests and even complement the ambience for the hotel.

The lighting concept thus challenges this and using very controlled optics, high RA9, colour rendering and tunable white solution of the grow lights, we are able to create the atmosphere of being in the forest in the daytime in 3800K, while evening approaches, the lighting ambience transforms into an atmospheric garden at 3100K. The lighting level changes throughout the day, responding to the natural lighting environment and the needs of the greenery. The grow lights double up to support growth and form part of the overall scenes and ambience of the atrium, which was originally too dark before the renovation.

The interior architectural lighting in the common spaces of the hotel, enhances and highlights the ambience and elements of the interior architectural features, creating more focus and emphasis on the lush gardenscape. The interior architectural lighting also involves the overall lighting in the reception, atrium space, in addition to the landscape lighting. The



lighting at dining areas is also designed at ambient levels, allowing the greenery to take the centre stage.

The opportunity of giving new light to the American artist, Richard Lippold's suspended sculpture, *Orchidea*, and turning it into a light art show interaction with the metallic forms of the sculpture and bringing life to the atrium each evening, hourly from 7pm to 9 pm. Transitioning from a gardenscape, it turns into a futuristic scape of light and sound, bringing out the artistic playfulness of the on-site architectural elements by architect's John Portman's impressive atrium space, American Sculptor's Richard Lippold's hanging sculpture, *Orchidea* and the newly transformed interior garden scape by FDAT Architects and Ramboll Studio Dreiseitl.

The two-and-a-half-minute light show will engage onsite volumes, planes and with the *Orchidea* as one of the key elements of the light show, enhancing interaction of light and space with the metallic suspended wires, geometric forms soaring through the atrium and engaging the atrium on the whole,



and further bringing out the mood of euphoric futurism, spiritual aspiration.

The overall lighting concept strives to enhance and complement the built form versus the soft forms of nature, with views from the bridge, the all-day

dining restaurant, and from the atrium.

The experience continues with an overall aerial view from the upper guest corridors, where the transition of the day to night time ambience of the atrium, and the evening light show.

# Smart street lights that create the right ambiance



Photo credit: TVILIGHT Projects BV

Smart street lights have been around for quite some time now and they are helping cities across the globe to become smarter, safer, and energy-efficient. They give complete control of public lighting infrastructure to the municipality/ lighting operator; cut energy cost and help limit operating and maintenance costs. Smart street lighting even contributes toward the planet – helping lower light pollution and carbon emissions and benefiting local flora and fauna. Now, thanks to new innovations, smart street lights also help create the right ambiance on the streets!

---

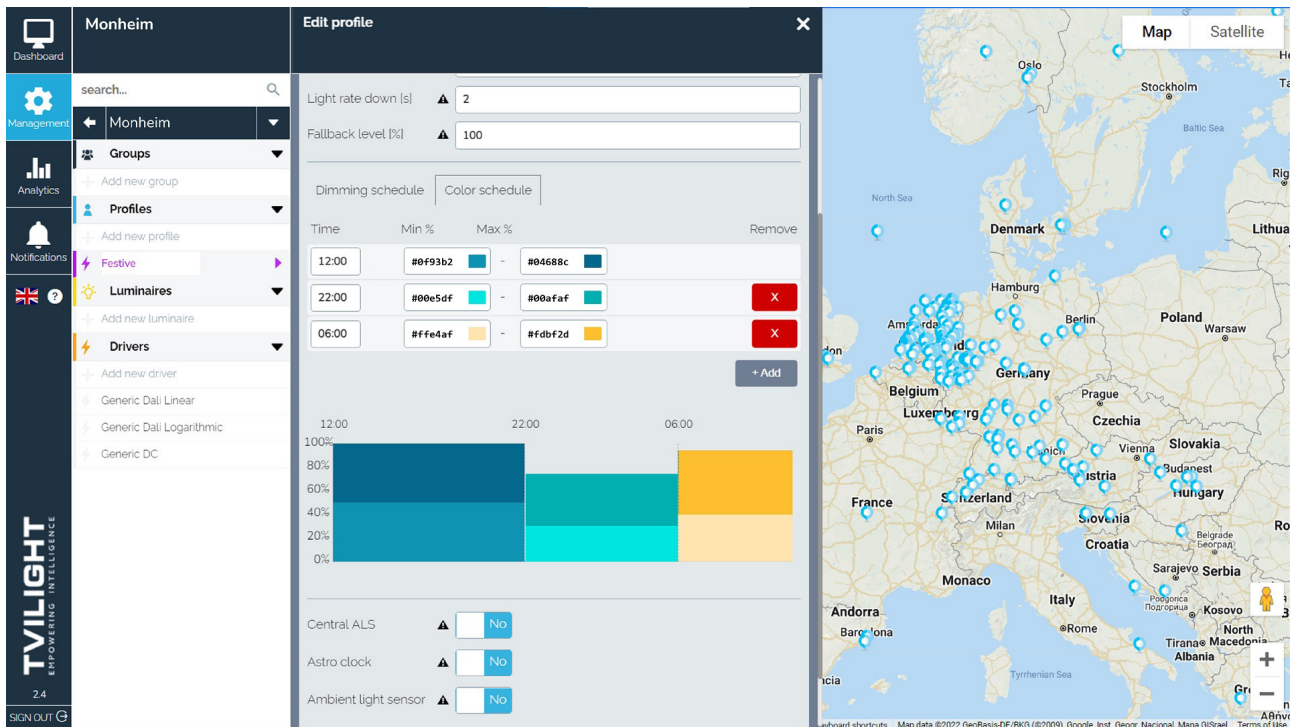


Photo credit: TVILIGHT Projects BV

The town of Monheim am Rhein in Germany, home to 40.000 citizens, sets an excellent example of such human-centric intelligent street lighting. The administration always believed in making the town better and more attractive place where citizens enjoy a great quality of life and tourists experience a wonderful stay. To achieve this, Monheim made a wise investment in a state-of-the-art RGBW (colour) smart street lighting solution, which gave the administration the ability to create a pleasing ambiance for the citizens, tourists as well as local businesses.

“Using modern digital solutions, such as smart streetlights, we are improving the quality of life of our citizens as well as Monheim’s attractiveness as a location for business,” said Daniel Zimmermann, Mayor of Monheim.

Through a central management system, the administration can monitor, control and manage individual IoT-connected street lights from a centralized location. They can easily set the on / off timings, lamp brightness, and even the colour of street lights. Further, the colour of street lights can be scheduled well in advance for specific days or certain festive events, helping the administration to plan in advance. The administration also has the option to pair such street lights with motion sensors, which help tune the colour based on human movements.

It is truly a future-proof smart city solution that helps the town of Monheim to:

- Remotely create colourful light scenes to match special events in the town
- Inspire citizens to spend more time outdoors
- Attract tourists
- Benefit local businesses
- Achieve exceptional energy savings
- Reduce operating and maintenance costs
- Prevent light pollution and CO2 emissions
- Protect local flora and fauna
- Create a foundation for IoT and Smart City applications to realize its “Monheim 4.0” goals

The RGBW smart street lighting solution is offered by TVILIGHT, Europe’s leading company for street light motion sensors, street light controllers, and a central management system. They have over 800 projects across the globe and believe that more cities will adopt RGBW smart street lighting to make citizens happy and the planet greener.

“Colourful street lights create a pleasing environment for citizens and visitors. Colours inspire citizens to spend more time outdoors. This is the first-of-kind RGBW smart street lighting project, and Monheim is perhaps the first town in Europe to have such a solution. We are convinced that Monheim implementation will inspire other towns and cities to adopt smart lighting solutions,” said Heide Jeuken, CEO, Tvilight.

#### PROJECT DATA

**Project Name:** Monheim Town

**Project Location:** Monheim am Rhein, Germany

**Client:** Stadt Monheim am Rhein // Lehner Leuchten

**Lighting Product Supplier:** TVILIGHT Projects B.V.

**Lighting Products:** Tvilight’s RGBW (colour) smart street lighting solution

**Completion:** 2022

## Ayrton's Cobra strikes at Prolight + Sound



Ayrton's famous lightshow at Prolight + Sound featured its newly launched products.

Paris, France – Ayrton celebrated its 20th anniversary at Prolight + Sound with a new lightshow, created by Stéphane Migné in conjunction with French water effects company, Aquatique Show. This showcased Ayrton's latest products including the new Zonda 9 FX with its stunning liquid effects and Cobra, Ayrton's first IP65 laser sourced fixture. The imaginative visual choreography gave a taste of the creativity these new products are capable of and ensured Ayrton remained one of the busiest stands at Prolight + Sound.

"It is incredible to be back at Prolight + Sound after two years," says Ayrton CEO, Chris Ferrante. "We have been busy engineering and developing new products, such as Domino LT and Huracan LT. Now, for the first time, we are showing Zonda 9 FX and Cobra, our laser light sourced fixture. These are all clever, unique products, especially the liquid effects in Zonda which are absolutely stunning, and the narrow 0.6° beam of Cobra – these are things we couldn't have achieved just a few years

ago. It's been super to show these new products to the industry in person and to hear first-hand their overwhelmingly positive response."

### Zonda 9

Central to the show and making their debut were Zonda 9 FX and Zonda 9 Wash, the first luminaires in a new family of products devised for stage lighting. Each fixture has a flat face formed of 37 40W RGBW LEDs, each with a 50mm front lens, that deliver a 25,000 lumen output and 4° - 56° zoom – and in the case of Zonda FX, a high-definition liquid effect (LiquidEffects™) between its main lenses which can create complex graphic effects. This new feature caused a lot of excitement demonstrating its phenomenal potential for a multiplicity of unique effects.

### Cobra

Ayrton's first IP65 laser-sourced fixture, Cobra, received its eagerly awaited official launch at the show. Designed for rendering a D65 white point that allows

perfect colour reproduction, Cobra is the only luminaire on the market capable of illuminating an object several kilometres away, with an output of 386,000 lux at 20m, an unprecedented 38x zoom ratio and an incredible zoom range of 0.6° to 23°. Possessing continuous pan and tilt, a highly innovative colour section and unrivalled graphics capability (including 92 gobos, four prisms and an extreme range of focus (XT-Focus™) which permits the beam shape to be adjusted according to the operating distance), Cobra is also IP65 rated.

Already specified on several major tours for 2022, Cobra is currently on the road with Ed Sheeran's tour which began this week.



Ayrton launched Cobra, its first factory standard phosphor laser source luminaire and the only luminaire on the market capable of illuminating an object several kilometres away.

### Domino LT

Domino LT also took its place for the first time in the show – and under the fountains – demonstrating its capabilities as a IP65-rated 1000W, 6700K profile fixture with a 51,000 lumen output, and a 3.5° - 53° zoom through its 225mm front lens.

Domino LT is the first all-terrain LED luminaire in Ayrton's 'LT' (Long Throw) range, and is designed for intensive outdoor use in long-distance applications that require high precision. It combines the minimalist design of Domino Profile with the colour mixing capabilities of Huracán Profile and the IP65 weather-proofing of Perseo.



Ayrton launched Zonda 9 Wash (left) and Zonda 9 FX (right), the first luminaires in a new family of multi-source products devised for stage lighting.



Ayrton Domino LT made its debut at Prolight + Sound 2022.

## Lumileds new CSP high power LED, LUXEON HL2Z for very high output, tighter beam control, and lower system costs

San Jose, California, USA – Lumileds has introduced LUXEON HL2Z, an un-domed, CSP, single-sided, high-power LED that significantly reduces system costs while delivering high flux density, high luminance and precise beam control. It delivers more than 315 lumens and more than 160 lumens per Watt from a compact 2.3mm square package that is just 0.36mm high.

Adopters of the new package include M3 Innovation, whose MAKO Sports Lighting Solution uses the LUXEON HL2Z to deliver 150,000 lumens from each of its modules designed to illuminate athletic fields, parks, stadium fields and other outdoor facilities. “With LUXEON HL2Z we were able to completely re-think what can be achieved in a sports lighting solution, the power, optical control, and design possibilities are what made the MAKO disruptive in the market” said Joe Casper, Executive Officer at M3 Innovation.

“Customers that are engineering street lights, stadium lights and other high luminance directional applications benefit from an un-domed source as it makes it easier to increase optical efficiency and to realize narrow beam angles and complex light distributions,” said Alvin Yeoh, Product Manager. “With LUXEON HL2Z, everything from array configuration design to DLC qualification is simplified and system costs can be lower by 20 percent or more.”

Lumileds’ focus on quality, reliability, and long-term stability for all LUXEON LEDs holds true for LUXEON HL2Z. In addition to the available LM80 data, rayset data and visual inspection prove the excellence of LUXEON HL2Z’s colour consistency across the beam enabling it to support high quality illumination indoors or outdoors.

LUXEON HL2Z is specified for R9 <sup>3</sup> 40 for 70CRI,



MAKO Sport Field Lighting with LUXEON HL2Z.



Leading Flux Density - Colour Consistency

Precise Beam Control - Proven Package

10,000 hours LM80 - DLC R9 Enabled

R9 <sup>3</sup> 0 for its 80CRI, and R9 <sup>3</sup> 50 for 90CRI parts meaning that solutions with LUXEON HL2Z can qualify for DLC Standard or Premium listing.

LUXEON HL2Z is immediately available through Lumileds distribution network for CCTs from 3000K – 6500K and with CRIs of 70, 80, and 90.

## Nora Lighting introduces LED Strip Light with Selectable CCT

Commerce, California, USA – Nora Lighting has introduced a new 120-277V LED Strip Light with built-in switch to change the colour temperature.

Industrial strip lights deliver up to 3200 lumens in 4’ length and white finish. Fixtures can be surface mounted or pendant mounted in standard white finish. Colour temperature switches change the CCT between 3000K / 3500K / 4000K. Fixtures can be daisy chained together for continuous runs on a single switch.

An emergency battery backup is available with an integral test switch for easy installation. Integral motion sensor can also be specified without automatic on/off operation. An ideal solution for storage or utility buildings, coves, display cases, workshops and garages for task and general lighting.



The new 120-277V LED Strip Light. Photo credit: Nora Lighting

## Introducing ROD, a new table lamp as part of the exclusive Diesel Living with Lodes line

The Diesel Living with Lodes line has been extended to include ROD, a portable and rechargeable table lamp. The lighting assortment from the partnership between Lodes, the established decorative lighting brand, and DIESEL, the international lifestyle brand owned by OTB group, made its debut in January 2021 with three novelties, Flask, Vinyl and Urban Concrete, alongside five renovated bestsellers.

ROD is the latest design from the two quintessentially Italian brands, which is available now. ROD's design concept stems from the form of a construction rod, typically used to hold blocks of cement together. In keeping with DIESEL's industrial aesthetic, the team employed the 'rod' as a recognizable motif within the design of a traditional table lamp. The slender stem connects two imaginary blocks of cement, rising from the base and supporting the shade, which hosts the LED light source.

The contrast between the subtle elegance of the lamp and the association with robust materials is a common thread explored throughout the Diesel Living with Lodes line.

Small yet robust, the lamp is portable and rechargeable via a C-type-USB port, which is protected by a rubber cap. This specific feature allows the light to be protected from dust, dirt and splashes, making ROD a perfect choice for use within hospitality venues as well as residential settings. With a 8-hour battery life at maximum power and up to 180 hours on minimum power, ROD is functional and practical without compromising on aesthetic design. Available in Moss Gray, Soft Pink, Ivory and Dark Asphalt, this new table lamp has a color to suit every mood. ROD has a total height of 35.6cm comprised of an aluminum base, steel stem, aluminum head, and methacrylate diffuser. To adjust the level of light, the user can simply touch the top of the shade – all typically external functions have been carefully incorporated within the lamp's internal structure.

Massimiliano Tosetto, Managing Director at Lodes, comments: "Lodes is



ROD from the Diesel Living with Lodes collection. Photo: © Lodes

delighted to announce a new product in collaboration with DIESEL. It's exciting to see such momentum behind this product line, which is testament to the energy and engagement demonstrated by both teams throughout the process. The unification of Lodes' manufacturing capabilities coupled with Diesel's creative input contributes to innovation behind the collaboration, as demonstrated by ROD, our latest design."

The Diesel Living with Lodes line

follows the success of other highly acclaimed DIESEL collaborations, such as with Moroso (furniture), Scavolini (kitchens and bathrooms), Seletti (home accessories), Berti (wooden flooring), Iris Ceramica (ceramic floor and wall coverings), Mirabello Carrara (home textiles) and Wall&decò (wallpaper). The lighting collection will allow customers to complete their interiors with a wider range of DIESEL products for every part of the home and living space.

WORLD BEX SERVICES INTERNATIONAL



THE 25<sup>TH</sup> PHILIPPINE WORLD BUILDING AND CONSTRUCTION EXPOSITION

# WORLD BEX



A LEGACY BUILT

AUGUST 31 TO  
SEPTEMBER 3 | 2022



WORLD TRADE CENTER<sup>®</sup>  
METRO MANILA



**HYBRID  
EVENT**



[worldbex.com](http://worldbex.com)



[inquire@worldbexevents.com](mailto:inquire@worldbexevents.com)

# BEX ASIA

BUILT ENVIRONMENT XPO ASIA

6 - 8 SEPTEMBER 2022  
SANDS EXPO & CONVENTION CENTRE

Meet and re-connect with your potential suppliers and partners in person at the region's premier market intelligence platform for the built environment.



## PRODUCT CATEGORIES AVAILABLE AT BEX ASIA 2022



Advanced Materials & Sustainability



Advanced Construction Solutions



Architectural & Interior



Digitalisation



HVAC & IAQ



Mechanical, Electrical & Plumbing



Smart Facility Management



Sustainability

## WHY YOU SHOULD VISIT BEX ASIA



Source the Latest Built Environment Solutions for Your Projects



Be Part of the Conversation on The Trends and Opportunities that will Facilitate Business Growth and Transformation at IBEW (International Built Environment Week) Conference



Learn From the Latest Innovations and Solutions At Our Complimentary Technical Seminars



Identify, Connect and Establish Partnerships with Thousands of Sellers and Buyers Through Our Smart Matching System



Connect with International Peers and Suppliers to Expand Your Network and Business Opportunities

Pre-register your complimentary visitor pass now to skip the queues on 6- 8 September 2022!



WWW.BEX-ASIA.COM

### Organiser



### Strategic Partner

Building and Construction Authority



### An Event Of



### An Initiative Under



### Housed within BEX Asia



### BuildSG Partners



DESIGN ASIA 2022

ArchXpo 2022

FIRE & DISASTER ASIA 2022 SINGAPORE

SAFETY & SECURITY ASIA 2022 SINGAPORE



# Architecture & Building Services 2022

Sustainability In A Digital Built Environment

iFME INTERNATIONAL FACILITY MANAGEMENT EXPO 2022

LIGHTING ASIA 2022

WORK SAFE ASIA 2022 SINGAPORE



**16 - 18 November 2022**



Marina Bay Sands Singapore  
Sands Expo & Convention Centre | Halls B & C

26 > 29  
JULY 2023  
10.00AM - 7.00PM

**KLCC**  
KL CONVENTION  
CENTRE, MALAYSIA

An Event Of:  
**KLAF2023**  
KUALA LUMPUR ARCHITECTURE FESTIVAL

# ARCHIDEX<sup>®</sup>

THE 22ND INTERNATIONAL ARCHITECTURE, INTERIOR  
DESIGN & BUILDING EXHIBITION 2023, MALAYSIA

ASIA'S LEADING ARCHITECTURE  
BUSINESS EVENT

SCAN HERE  
for more info



[www.ARCHIDEX.com.my](http://www.ARCHIDEX.com.my)

Featuring:



Jointly Organised By:



# SUBSCRIPTION FORM

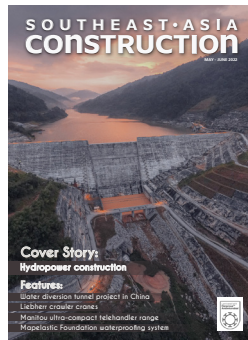
Email us at [info@tradelinkmedia.com.sg](mailto:info@tradelinkmedia.com.sg)

## PRINT

Please (✓) tick in the boxes.



Southeast Asia Building  
Since 1974



Southeast Asia Construction  
Since 1994

**1 year (6 issues) per magazine**

|                               |             |
|-------------------------------|-------------|
| Singapore                     | SGD\$60.00  |
| Malaysia / Brunei             | SGD\$105.00 |
| Asia                          | SGD\$155.00 |
| America, Europe               | SGD\$185.00 |
| Japan, Australia, New Zealand | SGD\$185.00 |
| Middle East                   | SGD\$185.00 |



Bathroom + Kitchen Today  
Since 2001

**1 year (4 issues) per magazine**

|                               |             |
|-------------------------------|-------------|
| Singapore                     | SGD\$32.00  |
| Malaysia / Brunei             | SGD\$70.00  |
| Asia                          | SGD\$85.00  |
| America, Europe               | SGD\$135.00 |
| Japan, Australia, New Zealand | SGD\$135.00 |
| Middle East                   | SGD\$135.00 |

## DIGITAL



### Lighting Today

is available on digital platform.  
To download free PDF copy,  
please visit:

<http://lt.tradelinkmedia.biz>

Lighting Today  
Since 2002



### Security Solutions Today

is available on digital platform.  
To download free PDF copy,  
please visit:

<http://sst.tradelinkmedia.biz>

Security Solutions Today  
Since 1992

**Personal Particulars**

Name: \_\_\_\_\_

Position: \_\_\_\_\_

Company: \_\_\_\_\_

Address: \_\_\_\_\_

Tel: \_\_\_\_\_ Fax: \_\_\_\_\_

E-Mail: \_\_\_\_\_

## IMPORTANT

Please commence my subscription in  
\_\_\_\_\_ (month/year)

Professionals (choose one):

- |   |  |  |  |
|---|--|--|--|
| <input type="checkbox"/> Architect        | <input type="checkbox"/> Landscape Architect   | <input type="checkbox"/> Interior Designer | <input type="checkbox"/> Developer/Owner |
| <input type="checkbox"/> Property Manager | <input type="checkbox"/> Manufacturer/Supplier | <input type="checkbox"/> Engineer          | <input type="checkbox"/> Others          |

I am sending a cheque/bank draft payable to:

**Trade Link Media Pte Ltd, 101 Lorong 23, Geylang, #06-04, Prosper House, Singapore 388399**

Co. Reg. No: 199204277K \* GST inclusive (GST Reg. No: M2-0108708-2)

Please charge my credit card (circle one): Amex / Diner's Club

Card Number: \_\_\_\_\_ Expiry Date: \_\_\_\_\_

Name of Card Holder: \_\_\_\_\_ Signature: \_\_\_\_\_



# ADVERTISE WITH US TODAY!

Email us at [info@tradelinkmedia.com.sg](mailto:info@tradelinkmedia.com.sg)



Scan to visit our website

